



## WE NEED YOUR SUPPORT

### A new opportunity has arrived

Northern Colorado is growing, and with growth comes our opportunity to help more families who have kids with developmental disabilities.

How? A new, larger, more flexible, state-of-the-art, 20,000-square-foot facility will provide room to accommodate present and future needs for ready, dependable, and comprehensive care services.

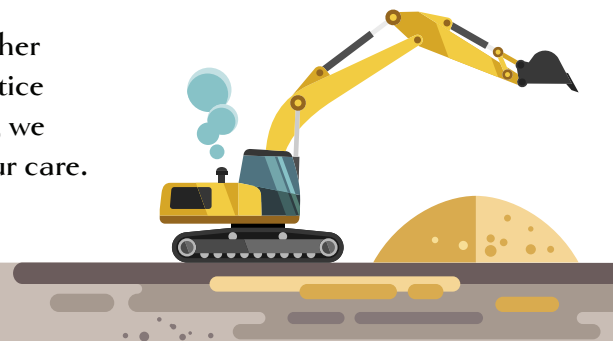
The new facility will equip us to serve 150+ Northern Colorado families at a time. Additionally, the new space will bring our entire team and all our families to one location, strengthening our connections with the people we serve. Once we open our new doors, our 65-child capacity will steadily expand to 150+ over time. We are growing with care and want to increase our capabilities the right way.

### Supporting our mission changes lives

Since 1982, Respite Care has fulfilled a simple but vital goal in Northern Colorado: to provide short-term, quality care for children with developmental disabilities and respite to their families, enabling them to enhance their quality of life.

Supporting the 24/7 requirements of a child with a disability can leave families exhausted. Respite Care offers compassionate relief so families can restore the strength to thrive.

We believe that a child with a disability is a child first and that his or her challenges are secondary, and we apply this philosophy to daily practice with our interactive, stimulating, and safe environment. Throughout, we address the physical, emotional, and social needs of every child in our care.



Capital  
Campaign  
with care, we grow

# More Space, More Programs, More Respite: With Care, We Grow

20,000 square feet will give us the physical room to grow and will also allow us to add new enrichment programs, day camps, specialized classrooms by age group, enlarged common spaces adapted to meet diverse needs, and enhanced sensory, safety, and communication features.

This will mean more fun, learning, and growth for kids ages 6 weeks to 18 years old, and more peace of mind for their grateful loved ones. More families will grow stronger, thereby strengthening the community.

As you can see, an investment in Respite Care is an investment in Northern Colorado. We are building a better community.

## Will You Help Us?

We are underway. The building site is already secured: 2.5 acres of donated land in the I-25 corridor in Timnath valued at \$1.2 million. As of May 2024, we have raised \$7.6 million through the support of a local foundation and many supporters and community members. In addition, our current building on Lemay will be listed to sell for \$1.9 million. Our total fundraising goal is \$12 million. This will turn a dream into reality for hundreds of Northern Colorado families. The Capital Campaign will result in a state-of-the-art facility that offers a wide range of indoor and outdoor spaces specifically designed to promote children's learning, play, and overall well-being in a safe, sensory-focused, and accessible environment.

The new facility will go from promise to reality in the months to come—with the help of you and others who believe that strong families build a strong community. We have assembled a committee of dedicated and passionate Respite Care champions who are committed to upholding our promise of delivering exceptional quality services to more families in Northern Colorado. Our committee members include: LeAnn Massey and Ross Thompson (Co-Chairs), Kaitlin Bjork, Charlie Bouchard, Larry Brazil, Kristi Briles, Cindy DeGroot, Steve Joyce, Larry Kendall, and Mark Soukup.

For updates, visit our Capital Campaign page at [www.respitecareinc.org/campaign](http://www.respitecareinc.org/campaign). This is the hub of all our latest information, providing details about our campaign goals, progress, events, and opportunities for involvement. Stay connected and witness the impact of your support firsthand.

We value your engagement and are grateful for your continued interest in Respite Care. Together, we can make a meaningful difference in the lives of children and families in our community.

If you are interested in learning more, please reach out to Kaitlin Bjork at [kaitlin@respitecareinc.org](mailto:kaitlin@respitecareinc.org).

